

5TH ANNUAL  
NORTHWESTERN WOMEN  
IN MEDICINE CONFERENCE

# THE JOY AND POWER OF OUR COMMUNITY



Northwestern Memorial Hospital,  
Feinberg A  
In-Person & Virtual Live Stream

**SPONSORED BY:**

Office of Continuing Medical Education  
Northwestern University Feinberg School of Medicine  
Northwestern Memorial Hospital  
Ann & Robert H. Lurie Children's Hospital of Chicago

THE NORTHWESTERN UNIVERSITY  
FEINBERG SCHOOL OF MEDICINE  
DESIGNATES THIS LIVE ACTIVITY  
FOR A MAXIMUM OF:

**7.5 AMA PRA CATEGORY 1 CREDITS™**

**FRIDAY, MARCH 24, 2023**



**REGISTER NOW!**  
[tiny.cc/womeninmedicine2023](https://tiny.cc/womeninmedicine2023)

## 5TH ANNUAL NORTHWESTERN WOMEN IN MEDICINE CONFERENCE

# THE JOY AND POWER OF OUR COMMUNITY

**Women in medicine face unique challenges and obstacles throughout their professional careers.** These challenges may affect leadership development and opportunities for women in medicine resulting in a gender gap in the governance of academic medical centers. Women physicians and other health care workers currently lack a conference or forum for discussing strategies to achieve equality in the workplace, wellness and work life balance, mentorship and career development. The 5th annual Northwestern Women in Medicine conference will help to identify the obstacles that contribute to gender inequity and will start the discourse to bridging it by hosting an in-person conference.

We will shed light on gender disparities and then share experiences and tools to overcome the barriers that exist in medicine for female physicians so as to empower and create a network to lean upon.

### LEARNING OBJECTIVES

At the conclusion of this activity, participants should be able to:

1. Recognize and develop strategies to increase sponsorship of women in medicine and harness the power of community
2. Cultivate characteristics of being an inclusive leader and ally
3. Teach to mitigate bias in the work environment in order to recruit and develop strong, engaged staff
4. Describe and learn to implement steps to achieve joy in medicine
5. Recognize the barriers to leadership and building community
6. Explore ways to promote gender equity in leadership

### TARGET AUDIENCE

This continuing medical education program is designed to meet the educational needs of multiple specialties.

### VIRTUAL LIVE STREAM FORMAT

The program will be held in-person at Northwestern Memorial Hospital, and via virtual live stream. Information about the virtual platform will be sent to registrants three days prior to the session.

### ACCREDITATION STATEMENT

The Northwestern University Feinberg School of Medicine is accredited by the Accreditation Council for Continuing Medical Education (ACCME) to provide continuing medical education for physicians.

### CREDIT DESIGNATION STATEMENT

The Northwestern University Feinberg School of Medicine designates this live activity for a maximum of 7.5 *AMA PRA Category 1 Credit(s)*<sup>™</sup>. Physicians should claim only the credit commensurate with the extent of their participation in the activity.

### FACULTY DISCLOSURE

In accordance with the Accreditation Council for Continuing Medical Education's (ACCME) Standards for Integrity and Independence in Accredited Continuing Education, the Feinberg School of Medicine's Office of CME has determined that this activity is non-clinical..

### ADDITIONAL INFORMATION

For more information, Contact Amanda Harrison at [amanda.harrison@northwestern.edu](mailto:amanda.harrison@northwestern.edu) or visit our website at: [cme.northwestern.edu](http://cme.northwestern.edu) or [www.medicine.northwestern.edu/about/women-in-medicine.html](http://www.medicine.northwestern.edu/about/women-in-medicine.html).

# FACULTY

## COURSE DIRECTORS



**Sally Friedewald, MD**  
Chief of Breast Imaging  
Department of Radiology  
Associate Professor of Radiology  
Northwestern University  
Feinberg School of Medicine



**Cybele Ghossein, MD**  
Vice Chair for Academic and Faculty  
Affairs, Department of Medicine  
Professor of Medicine (Nephrology  
and Hypertension)  
Northwestern University  
Feinberg School of Medicine



**Sadiya Khan, MD, MSc**  
Assistant Professor,  
Medicine and Preventive Medicine  
Northwestern University  
Feinberg School of Medicine



**Angira Patel, MD, MPH**  
Director, McGaw Bioethics Clinical  
Scholars Program  
Associate Professor, Pediatrics-  
Cardiology and Medical Education  
Northwestern University  
Feinberg School of Medicine



**Shawn Smith, MD**  
Director, Heath Equity Learning  
and Development  
Assistant Professor, Pediatrics  
Northwestern University  
Feinberg School of Medicine

## SPEAKERS



**Rinad Beidas, PhD**  
Chair, Department of Medical  
Social Sciences  
Ralph Seal Paffenbarger Professor  
of Medical Social Sciences  
Northwestern University  
Feinberg School of Medicine



**Michelle Brown, MD**  
Legislative Chair, IL Section of ACOG  
System Clinician of Obstetrics  
and Gynecology  
Northwestern University  
Feinberg School of Medicine



**Mercedes Carnethon, MS, PhD**  
Vice Chair, Department of  
Preventive Medicine  
Mary Harris Thompson Professor  
Professor of Preventive Medicine  
(Epidemiology) and Medicine  
(Pulmonary and Critical Care)



**Howard B. Chrisman, MD**  
President and CEO, NMHC  
Professor of Radiology and Surgery,  
Northwestern University  
Feinberg School of Medicine



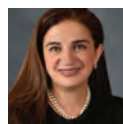
**Chelsea Dorsey, MD**  
Associate Professor of Surgery at  
the University of Chicago Medicine,  
Vice-Chair of Diversity, Equity, and  
Inclusion in the Department of  
Surgery, and the Associate Dean for  
Medical Student Academic Advising  
and Advancement



**Khalilah Gates, MD**  
Assistant Dean of Medical Education  
Associate Professor of Medicine  
(Pulmonary and Critical Care) and  
Medical Education  
Northwestern University  
Feinberg School of Medicine



**Cassing Hammond, MD**  
Associate Professor of Obstetrics  
and Gynecology (General Obstetrics  
and Gynecology)  
Northwestern University  
Feinberg School of Medicine



**Roxana Mehran, MD**  
Director, The Women Heart and  
Vascular Center at Mount Sinai Heart  
Director, The Center for  
Interventional Cardiovascular  
Research and Clinical Trials  
Endowed Mount Sinai Professor in  
Cardiovascular Clinical Research  
and Outcomes  
Professor of Medicine (Cardiology)  
Professor of Population Health  
Science and Policy



**Kelly Michelson, MD, MPH**  
Professor of Pediatrics,  
Julia and David Uihlein Professor of  
Bioethics and Medical Humanities  
Director, Center for Bioethics and  
Medical Humanities  
Chief Ethics Officer, Institute for  
Augmented Intelligence in Medicine  
Northwestern University  
Feinberg School of Medicine  
Attending Physician, Division of  
Pediatric Critical Care Medicine  
Ann & Robert H. Lurie  
Children's Hospital of Chicago

CONTINUED...

# FACULTY



**Keith Olson, MA**  
Director,  
Physician Consulting Services  
Ann & Robert H. Lurie  
Children's Hospital of Chicago



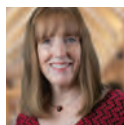
**Olutoyin Olutoye, MD, MSc**  
Anesthesiologist-In-Chief  
Arthur C. King Professor & Chair for the  
Department of Pediatric Anesthesiology  
Ann & Robert H. Lurie  
Children's Hospital of Chicago  
Professor of Anesthesiology at  
Northwestern University  
Feinberg School of Medicine  
Co-President of the International  
Fetal Medicine & Surgery Society



**Feyce M. Peralta, MD, MS, FASA**  
Associate Professor of Anesthesiology  
Program Director, Obstetric  
Anesthesiology Fellowship  
Vice Chair for Faculty Development  
& Diversity, Equity, and Inclusion  
Department of Anesthesiology  
Northwestern University  
Feinberg School of Medicine



**Maura Quinlan, MD, MPH**  
Women's Health Medical Advisor  
at the Illinois Department of Public  
Health Associate Professor of  
Obstetrics and Gynecology  
Northwestern University  
Feinberg School of Medicine

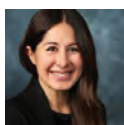


**Mary Walsh, MD**  
Medical Director, Heart Failure and  
Cardiac Transplantation Programs  
Ascension St. Vincent Heart Center,  
and the Ascension St Vincent  
Cardiovascular Research Institute;  
Program Director, St. Vincent  
Advanced Heart Failure and  
Transplantation Fellowship



**Diane Wayne, MD**  
Professor of Medicine  
Northwestern University  
Feinberg School of Medicine  
Vice President for Administration  
Northwestern Memorial HealthCare

## MODERATORS



**Nina Alfieri, MD, MS**  
Instructor of Pediatrics  
Ann & Robert H. Lurie  
Children's Hospital of Chicago



**Oluwateniola Brown, MD**  
Assistant Professor of Obstetrics,  
Gynecology & Reconstructive Surgery  
Ann & Robert H. Lurie  
Children's Hospital of Chicago



**Manjot K Gill, MD**  
Professor of Ophthalmology  
and Medical Educations  
Northwestern University  
Feinberg School of Medicine



**Ruchi Gupta, MD, MPH**  
Profess of Pediatrics, Allergy and  
Immunology and Preventative  
Medicine, Ann & Robert H Lurie  
Children's Hospital of Chicago



**Allison Kessler, MD, MSc**  
Assistant Professor of Physical  
Medicine and Rehabilitation,  
Northwestern University  
Feinberg School of Medicine



**LaTasha Nelson, MD**  
Associate Professor of Obstetrics  
and Gynecology  
Northwestern University  
Feinberg School of Medicine



**Vera Rigolin, MD**  
Professor of Medicine (Cardiology)  
Northwestern University  
Feinberg School of Medicine



**Lisa Rosenthal, MD**  
Professor of Psychiatry and  
Behavioral Sciences and  
Medical Education  
Northwestern University  
Feinberg School of Medicine

## STEERING COMMITTEE

**Nina Alfieri, MD, MS**  
**Anila Bindal, MD**  
**Oluwateniola Brown, MD**  
**Jennifer Chan, MD, MPH**  
**Deb Clements, MD**  
**Laila Gharzai, MD**  
**Manjot Gill, MD**  
**Ruchi Gupta, MD, MPH**  
**Allison Kessler Vear, MD, MSc**  
**Priya Kumthekar, MD**  
**Choy Lewis, MD**  
**Kerri Machut, MD**  
**Bonnie Martin-Harris, MD**  
**Ritu Nayar, MD**  
**LaTasha Nelson, MD**  
**Bethany Perez White, PhD**  
**Vera Rigolin, MD**  
**Cindy Rigsby, MD**  
**Lisa Rosenthal, MD**  
**Erin Rowell, MD**  
**Nancy Sassower, MD**  
**Farzaneh Sorond, MD, PhD**  
**Katelyn Stepan, MD**  
**Leah Tatebe, MD**

# AGENDA

## FRIDAY, MARCH 24, 2023

8:00 am	<b>OPENING REMARKS</b> Cybele Ghossein, MD Angira Patel, MD, MPH Sarah Friedewald, MD Shawn Smith, MD Sadiya Khan, MD	1:00 pm	<b>Power of Physician Coaching</b> Keith Olson, MA
8:05 am	<b>WELCOME REMARKS</b> Howard Chrisman, MD	1:40 pm	<b>Q&amp;A</b> MODERATOR: Manjot Gill, MD
8:25 am	<b>Supporting an Upward Trajectory of Women in Medicine</b> Mary N. Walsh, MD	1:55 pm	<b>PANEL: Importance of Communities in the Lifecycles of Women in Science &amp; Medicine</b> Mercedes Carnethon, MS, Ph.D. Diane Wayne, MD Kelly Michelson, MD Feyce Peralta, MD, MS LaTasha Nelson, MD MODERATOR:
9:00 am	<b>Q&amp;A</b> MODERATOR: Nina Alfieri, MD, MS	2:45 pm	<b>Harnessing Implementation Science to Advance Gender Equity in Academic Medicine</b> Rinad Beidas, PhD
9:15 am	<b>Recognizing Racial and Gender Barriers to Building Community</b> Chelsea Dorsey, MD	3:05 pm	<b>Q&amp;A</b> MODERATOR: Lisa Rosenthal, MD
9:55 am	<b>Q&amp;A</b> MODERATOR: Ruchi Gupta, MD, MPH	3:15 pm	<b>BREAK</b>
10:05 am	<b>BREAK</b>	3:25 pm	<b>Journey to Leadership: The Importance of Mentors, Advocates and Allies</b> Olutoyin A. Olutoye, MD, MSc
10:25 am	<b>Creating a Leader: It Takes A Community</b> Roxana Mehran, MD	4:00 pm	<b>Q&amp;A</b> MODERATOR: Allison Kessler, MD, MSc
10:55 am	<b>BREAK</b> MODERATOR: Vera Rigolin, MD		Dr. Sassower
11:10 am	<b>PANEL: Physician Advocacy for Reproductive Rights - What We Can Do as a Community?</b> Cassing Hammond, MD Maura Quinlan, MD Michelle Brown, MD MODERATOR: Oluwataniola Brown, MD	4:15 pm	<b>CLOSING REMARKS: How Community Has Given Me Joy</b> Khalilah Gates, MD
12:10 pm	<b>LUNCH SOCIAL</b>	4:30 pm	<b>ADJOURN</b> Cybele Ghossein, MD Angira Patel, MD, MPH Sarah Friedewald, MD Shawn Smith, MD Sadiya Khan, MD
		4:30 pm	<b>RECEPTION IN KRUMLOVSKY ATRIUM</b>

5TH ANNUAL  
NORTHWESTERN WOMEN  
IN MEDICINE CONFERENCE

# THE JOY AND POWER OF OUR COMMUNITY



## REGISTER TODAY!

Contact Amanda Harrison at  
[amanda.harrison@northwestern.edu](mailto:amanda.harrison@northwestern.edu)

View our [website](#) for  
additional information!



scan, or visit: [tiny.cc/womeninmedicine2023](https://tiny.cc/womeninmedicine2023)